

CLASSIFIED

Let US HELP YOU

Call the I-R for your  
Classified advertising needs  
(785) 472-5085  
or stop by our office  
304 N. Douglas, Ellsworth

ADVERTISE IN THE I-R CLASSIFIED AND GET



FREE

PLACEMENT ON OUR POPULAR WEBSITE!

- \* All ads placed free on [www.indyrepnews.com](http://www.indyrepnews.com) and on the Ellsworth County Economic Development website
- \* Classified display; \$6 per inch
- \* Classified word ads: \$5 for 15 words, 25 cents for each extra word
- \* Deadline is noon Monday the week of publication


Real Estate

**MILLWOOD REALTY - ELLSWORTH OFFICE**  
SINCE 2006, PROVIDING PROMPT RESPONSE, EXPERIENCE, AND SERVICE FOR  
REAL ESTATE BUYERS & SELLERS IN THE ELLSWORTH COUNTY, KANSAS  
AREA! DOWNTOWN ELLSWORTH OFFICE. CALL OR TEXT US!




**Millwood Realty, Inc.**  
ANITA HOFFHINES, REALTOR  
785-531-0160  
MARK HOFFHINES, REALTOR  
785-531-1784

**OPEN HOUSE**  
Sunday, Nov. 22  
1 - 2:30 p.m.



**320 Kunkle, Ellsworth**  
Beautiful 4 bedroom 2 bath home with attached garage and detached 28x32 shed! \$179,500



**1108 Elizabeth Dr., Ellsworth**  
Beautiful 3 bedroom, 2 bath home with tons of living space. Home has finished bsmt. and bonus family room. \$174,500

Call us for all your real estate needs!

**IDEAL**  
Real Estate

Joni Glaser, Broker/Owner - 785-531-0929  
Kayla Erbe, Realtor - 785-420-0304  
Ryan Webber, Realtor - 785-531-0786  
Zillow.com | [www.idealkansas.com](http://www.idealkansas.com) | Realtor.com

Livestock

**Sylvan Sales Commission L.L.C.**

Bulls - 70-81.00  
Hy Cows - 60-66.00  
Ly Cows - 40-55.00  
1290 Hd Sold

11 mx Str.....	365.....	197.00
14 mx Str.....	508.....	162.00
18 mx Str.....	592.....	152.00
19 mx Str.....	553.....	156.00
82 mx Str.....	653.....	142.50
48 Blk Str.....	695.....	137.25
40 mx Str.....	550.....	161.00
59 mx Str.....	805.....	139.50
26 Blk Hfrs.....	523.....	138.00
73 Blk Hfrs.....	623.....	131.50
43 mx Hfrs.....	707.....	132.50
13 Blk Hfrs.....	997.....	118.00

Regular Sales Every Monday  
To Consign Cattle Contact  
Toby Meyer - 785-658-5772 • Brad Zorn - 785-658-7124 • Ryan Obermueller - 785-658-5858  
John Perry - 785-826-0377 • Cody Murray - 785-738-8055 Sale Barn - 785-526-7123

**For Rent**

**Chisholm Trail Apartments**  
625 Novak, Ellsworth, Ks.

**2 Bedroom Units Currently Available!**

- Appliances Furnished
- On site Laundry Facility
- Rent Based on Income
- Partial Utilities Paid
- Reduced Cable Rate

Call Twila, Manager  
**785-472-3765**  
TDD Users Call 800-766-3777

 This institution is an equal opportunity provider and employer. 

\*Ad designed by the Ellsworth County I/R.

**Appreciation**

I wanted to thank the doctors and nurses for the wonderful care I received in the hospital.

I would also like to thank the male nurses for a nice surprise, and the cooks for the birthday notes.

Juanita Poutre

\*Ad designed by Ellsworth County I/R

**FARMERS & RANCHERS LIVESTOCK COMMISSION CO.**  
Salina, KS

STEERS		HEIFERS	
300-400	\$103 - \$203.00	300-400	\$153 - \$163.00
400-500	\$172 - \$182.00	400-500	\$137 - \$147.50
500-600	\$154 - \$164.00	500-600	\$124 - \$134.50
600-700	\$146 - \$156.00	600-700	\$126 - \$136.00
700-800	\$131 - \$141.50	700-800	\$124 - \$134.00
800-900	\$133 - \$143.75	800-900	\$123 - \$133.75
900-1000	\$131 - \$141.00	900-1000	\$123 - \$133.75
Total for the Week - Cattle - 4880 Hogs-92			

**Early Consignments for Thursday: November 19, 2020**

- \* 144 S&H 625-700, fall vacce/open
- \* 9 S&H 600, vacce/weaned 60+ days
- \* 21 str 600-700
- \* 20 blk&bwt S&H 600-700, fall vacce/HR
- \* 22 S&H 550-600, vacce
- \* 25 blk&bwt str 500-600, spring vacce
- \* 48 blk S&H 500-650
- \* 30 S&H 600-650, off grass/LTW
- \* 38 S&H 500-650, HR/fall vacce/charx&blks
- \* 10 Red Angus str 850, HR/off grass/fall vacce
- \* 175 blk hfrs 650-800, HR/LTW/open
- \* 65 mostly blk str 825, off tricale

**Upcoming Special Sales**

**Weaned vacc sale**  
December 1st  
January 5th  
February 2nd

**Cow sales**  
November 17th  
December 15th

All Sales are on Tuesday at 11 am.

**Buffalo sale**  
Saturday, December 5th 11am

**In stock today**

- Heavy Duty Round Bale Feeders
- 42' ROUND BALE DUMP TRAILERS
- Heavy Duty Feed Bunks (silage & grain)
- Heavy Duty 5000# Grain Tote

**Czech Apartments**  
Wilson, KS

- One Bedroom Units
- On-site Laundry
- Utilities Paid
- Carport Available
- Furnished Available

Located in Historic Remodeled Grade School  
420 24th Street

  
**Call 785-658-3315**  
\*Ad designed by Ellsworth County I/R

**We Have Openings!**  
**THE PINES APARTMENTS**  
811 Elizabeth St., Ellsworth  
*Come see what we have to offer!*

Housing for seniors and disabled  
Income-based rent  
Handicap Accessible  
Appliances furnished  
Maintenance-free living  
Free In-House Laundry  
Pet Friendly  
Covered Parking  
Security Cameras and Storm Shelter  
Reception area for resident use  
Internet available  
Smoke-free environment  
And much more!

Contact Jan Bontrager at  
[thepines@eaglecom.net](mailto:thepines@eaglecom.net) or  
call (785) 472-4922  
Like us on Facebook!

Improvements are partially funded by the  
Dane G. Hansen Foundation and  
the Smoky Hills Charitable Foundation

Check out our website:  
[www.thepinesapts.org](http://www.thepinesapts.org)  
\*Ad designed by Ellsworth County I/R

**Wanted**

**Wanted to buy coin and currency collections, gold and silver jewelry, any shape, pocket watches, guns and war memorabilia. Call Steve (785) 472-1340.**

15-12p

**FINCH THEATRE**  
122 E. Lincoln Ave., Lincoln, KS ~ 785-524-4350 ~ [www.finchtheatre.com](http://www.finchtheatre.com)

**November 20-22**  
**Honest Thief**

PG-13 (1 hr 40 min)

Fri 7 pm; Sat 7 pm; Sun 3 pm

Tickets: 2 & Under Free; Adults \$5;  
Children 3-12/Seniors \$4.00;  
Add \$1.00 per ticket for 3D Movies

**Try one of our Great Popcorn and Soda Combos**

**Notices**

**Ellsworth AA**, 8 p.m. Tuesday, Thursday, Sunday, Episcopal Church, (785) 531-0685 or 531-1845.

**AI-Anon** Hope for Today for families and friends of alcoholics and others battling addictions, meet at 3 p.m. Tuesdays, 525 E. 3rd St., Ellsworth, (785) 531-2474 or (785) 472-1073.

**SENIOR MENUS**  
Nov. 23-27

**ELLSWORTH**

Lunches for people age 60 or older are a suggested donation of \$3.50 and under 60 are \$5.25. Reservations may be made by calling by 2 p.m. the day before the meal. Call Ellsworth at (785) 472-5185.

MONDAY — Ham/beans, salad, apple cobbler, cornbread and beverage.  
TUESDAY — Chicken-fried steak, mashed potatoes/gravy, green beans, fruit, roll and beverage.  
WEDNESDAY — Chili, cinnamon roll, coleslaw, crackers, peaches and beverage.  
THURSDAY — Thanksgiving. Closed.  
FRIDAY — Closed.

**WILSON and HOLYROOD**

Lunches for people age 60 or older are a suggested donation of \$3.50 and under 60 are \$5.25. The center offers free rolls and coffee at 9 a.m. on Fridays. Call the Wilson Senior Center at (785) 658-2388, or Holyrood at (785) 252-3640.

MONDAY — Spaghetti/meat sauce, garlic bread, salad, corn, pudding and beverage.  
TUESDAY — Chicken tenders, sweet potato wedges, broccoli, roll, fruit and beverage.  
WEDNESDAY — Chicken/noodles, carrots, roll, fruit, cookie and beverage.  
THURSDAY — Thanksgiving. Closed.  
FRIDAY — Thanksgiving. Closed.

For a complete list of cattle for all sales check out our website at: [www.fandrive.com](http://www.fandrive.com)

**NO SALE November 26th, 2020**

**Tuesday Dec. 1st Weaned/Vacc sale**

- 15 blk S&H 500-600
- 50 blk/red S&H 500-700
- 23 red&blk S&H 600-700, 2rd/45 days weaned
- 9 S&H 600-650
- 75 S&H 500-650
- 25 blk S&H 600-700, September 1st, weaning
- 65 blk S&H 500-650
- 10 S&H 500
- 36 S&H 500-600
- 35 mostly blk str 600
- 55 blk str 600-700
- 100 S&H 550-675, weaned 45 days/mostly blk
- 40 S&H 350+700, 2rd/Fink sired
- 60 str 750-800, 2rd/70+ days weaned
- 65 blk S&H, green garden sired/2rd
- 110 blk/bwt str, 2rd/GGA sired
- 70 blk&bwt S&H, 2rd
- 115 S&H 600-800, HR
- 25 S&H 500-600, HR
- 16 str 650-750, HR/2rd
- 50 blk S&H 500-600, 90+ days weaned
- 130 blk sin Angus str 550-650
- 135 blk&bwt S&H 550-650
- Blk&char S&H 400-500, oct, 1st weaned
- 10 blk S&H 400-500, Sept weaned
- 40 S&H 550-600
- 140 blk S&H 500-600, HR/Sept weaned

Sale Manager - Mike Samples - 785-825-0211 Ofc. • 785-826-7884 Cell  
Salina, Kansas

Listen to our markets on KSAL, Salina at 6:45 a.m. on Monday thru Friday.  
For more information or to consign cattle call sale barn or:  
Fieldman Representatives: Kenny Briscoe • Lincoln, KS • 785-524-4048  
Lisa Long • Ellsworth, KS • 620-553-2351  
Austin Rothman • Ellsworth, KS • 785-531-0042  
Cody Schaefer • 620-381-1050

\*Ad designed by Ellsworth County I/R

**FOR RENT**

Three, two and one bedroom apartments available.

We are accepting pets, restrictions apply.

**BENDER APARTMENTS**  
Call 785-476-5471, after 3:00 p.m.  
\*Ad designed by Ellsworth County I/R

**Plum Creek Apartments** leasing now. See [www.plumcreek156.com](http://www.plumcreek156.com) for more information. (785) 252-3800.

2-tfc-c

**Farm**

**Looking for pasture to rent.** Please call 785-531-1712.

13-4c

**Wanted**

**Wanted: Nativity** sets to display at the Art Gallery for the holidays. Call Georgina at 472-2277.

13-3c

**• You're on time for work**  
**• You're on time for your favorite sporting events**  
**• You're on time to pick up your kids**

*Please be on time for our deadlines!*

**Community page\*: THURSDAYS AT 5 p.m.**  
**News: FRIDAYS AT 5 p.m.**  
**Ads: MONDAYS AT NOON**

\*Deadline for Community page items (birthdays, anniversaries, engagements, weddings etc. is 5 p.m. THURSDAY. If information is received after the deadline and you require item to run that week, a charge of \$25 will occur (prepayment required).

**INDEPENDENT ELLSWORTH COUNTY REPORTER**  
304 N. Douglas • Ellsworth, KS • 785-472-5085



# Classified

## Help Wanted

### Riverview Estates

MARQUETTE, KANSAS

We are now hiring for a full time CNA and Nurse, bonus offered. Please apply in person at 202 S. Washington in Marquette, or download an application at [riverviewestatesks.com](http://riverviewestatesks.com). Call 785-546-2211 to inquire!

\*Ad designed by Ellsworth County I/R.

### Riverview Estates

MARQUETTE, KANSAS

We are now hiring for a director of nursing. Please apply in person at 202 S. Washington in Marquette, or download an application at [riverviewestatesks.com](http://riverviewestatesks.com). Call 785-546-2211 to inquire!

\*Ad designed by Ellsworth County I/R.

### Central Prairie Co-op

Today's Technology Yesterdays Values

Has a **Fulltime** opening for an Agronomy Billing/ Receptionist at our Bushton Hub Agronomy location.

#### Position requires:

Applicant should have good communication skills to work with the public and the ability to work with minimal supervision in a modern agriculture environment.

Applicant should have strong computer skills and some accounting knowledge. Experience with Agtrax software would be beneficial but not necessary.

Applicant must have a valid driver's license.

Competitive benefits are offered with this position.

Any applicant conditionally offered employment is subject to pre-employment drug test and a medical examination.

Interested persons can pick up an application at the Central Prairie Co-op Office at 225 S Broadway, Sterling, KS 67579 or Contact Brent Werth at 785-472-5271. Applications are available online at [www.cpcoop.us/careers](http://www.cpcoop.us/careers) and can be emailed to [bwerth@cpcoop.us](mailto:bwerth@cpcoop.us). Central Prairie Co-op is an EOE.

\*Ad designed by Ellsworth County I/R

### Multiple Openings

The Parts Specialist is responsible for servicing the parts needs of both customers at KanEquip parts counters, as well as Service Technicians for their repair needs. The Counter Sales position requires good salesmanship and customer service skills. Excellent people skills and efficient parts lookup and retrieval are required for both groups. Full-time, EOE

For more information, go to our website [www.kanequip.com](http://www.kanequip.com) or find the opening on Indeed.

Or stop by our Ellsworth location or call (785) 472-3114 with any questions.



\*Ad designed by Ellsworth County I/R



### IMMEDIATE JOB OPENINGS

Cashco, Inc., a global valve manufacturer located at 607 W 15th in Ellsworth, KS, has immediate openings in our facility offering competitive wages and benefits. Preferred skills for shop are familiarity with small hand tools, blueprint reading along with the ability to continuously handle parts weighing up to 50 pounds with or without accommodation. Education and experience will determine beginning wage. Complete job listing is located on our website along with application [www.cashco.com](http://www.cashco.com) or in Cashco's lobby. Contact Ellen Kempke, Personnel, 785-472-4461 X177 for more information. EEO/AAP/ADA employer.

\*Ad designed by Ellsworth County I/R

# CHRISTMAS IS COMING!

Give them the best Christmas present ever!  
A subscription to the I/R!

- \*In County – \$44.25
- \*Everywhere Else in Kansas – \$48.75
- \*Out of State – \$49.75
- \*On-line only – \$39.00

Name: \_\_\_\_\_  
Address: \_\_\_\_\_  
City: \_\_\_\_\_  
State/Zip: \_\_\_\_\_  
Phone: \_\_\_\_\_  
Email: \_\_\_\_\_



# INDEPENDENT -R ELLSWORTH COUNTY REPORTER

304 N. Douglas • Ellsworth, KS • 785-472-5085  
[www.indyrepnews.com](http://www.indyrepnews.com)

## Statewide Ads

#### For Sale

Steel Cargo/Storage Containers available in Kansas City & Solomon Ks. 20's 40's 45's 48's & 53's. Call 785.655.9430 or go online to [chuckhenry.com](http://chuckhenry.com) for pricing, availability & Freight. Bridge Decks. 40'x8', 48'x8'6", 90' x 8'6" 785.655.9430 [chuckhenry.com](http://chuckhenry.com)

#### Help Wanted/Truck Driver

Convoy Systems is hiring Class A drivers to run from Kansas City to the west coast. Home Weekly! Great

Benefits! [www.convoyssystems.com](http://www.convoyssystems.com) Call Tina ext. 301 or Lori ext. 303 1-800-926-6869.

#### Misc.

ARE YOU BEHIND \$10K OR MORE ON YOUR TAXES? Stop wage & bank levies, liens & audits, unfiled tax returns, payroll issues, & resolve tax debt FAST. Call 855-462-2769

DONATE YOUR CAR TO CHARITY. Receive maximum value of write off for your taxes. Running or not! All conditions accepted. Free pickup.

Call for details, 844-268-9386

Lowest Prices on Health Insurance. We have the best rates from top companies! Call Now! 855-656-6792.

ATTENTION MEDICARE RECIPIENTS! Save your money on your Medicare supplement plan. FREE QUOTES from top providers. Excellent coverage. Call for a no obligation quote to see how much you can save! 855-587-1299

BEST SATELLITE TV with 2 Year

Price Guarantee! \$59.99/mo with 190 channels and 3 months free premium movie channels! Free next day installation! Call 316-223-4415

Get A-Rated Dental Insurance starting at around \$1 PER DAY! Save 25% on Enrollment Now! No Waiting Periods. 200K+ Providers Nationwide. Everyone is Accepted! Call 785-329-9747 (M-F 9-5 ET)

BATHROOM RENOVATIONS. EASY, ONE DAY updates! We specialize in safe bathing. Grab bars,

no slip flooring & seated showers. Call for a free in-home consultation: 855-382-1221

Medical Billing & Coding Training. New Students Only. Call & Press 1. 100% online courses. Financial Aid Available for those who qualify. Call 888-918-9985

Recently diagnosed with LUNG CANCER and 60+ years old? Call now! You and your family may be entitled to a SIGNIFICANT CASH AWARD. Call 866-327-2721 today.

Free Consultation. No Risk.

NEW AUTHORS WANTED! Page Publishing will help you self-publish your own book. FREE author submission kit! Limited offer! Why wait? Call now: 855-939-2090

#### Sporting Goods

WORLD'S LARGEST GUN SHOW – November 14 & 15 – Tulsa, OK Fairgrounds. Saturday 8-6, Sunday 8-4. WANENMACHER'S TULSA ARMS SHOW. Free appraisals. Bring your guns! [www.TulsaArmsShow.com](http://www.TulsaArmsShow.com)

### KANSAS EVICTION PREVENTION PROGRAM



K

Rental assistance up to

# \$5,000

If you have fallen behind on rent due to the COVID pandemic, you may be eligible for eviction prevention assistance of up to \$5,000. Prevent future missed payments by applying at [kshousingcorp.org](http://kshousingcorp.org)

### Built Stronger. Looks Better. Lasts Longer.



OFFICE | WAREHOUSE | RETAIL | INDUSTRIAL

Visit our website to view thousands of commercial projects and discover how Morton can help your business succeed!

Eight offices serving Kansas  
800-447-7436  
[mortonbuildings.com](http://mortonbuildings.com)



©2019 Morton Buildings, Inc. A listing of CC licenses available at [mortonbuildings.com/licenses](http://mortonbuildings.com/licenses).

## PARTNER WITH US!

### AMERICA NEEDS JOURNALISTS SO DOES KANSAS



Journalists shed light on vital issues that may otherwise be kept in the dark. They expose problems and give citizens the tools they need to make informed decisions about issues that affect everyday life in their community.

**Help to ensure local newspapers are able to continue the important work that they do.**  
**PARTNER WITH US!**

[knf.column.us](mailto:knf.column.us)



# Public Notices

B7

## Public Notices

### Robert D. Cullens Estate

(First published in the Ellsworth County Independent-Reporter November 12, 2020)

#### IN THE DISTRICT COURT OF ELLSWORTH COUNTY, KANSAS

**In the Matter of the Estate  
of Case No. 2020-PR-000014  
Robert D. Cullens, Deceased**

#### NOTICE OF SALE OF REAL PROPERTY

THE STATE OF KANSAS TO ALL PERSONS CONCERNED:  
You are hereby notified that Travis M. Cullens, Executor of the Estate of Robert D. Cullens, deceased, will offer for sale at public auction the following described real property situated in Ellsworth County, Kansas, to wit:

Lot Seven (7), in Block Eight (8), Walmer's Addition to the City of Wilson, Ellsworth County, Kansas

on Friday, December 4, 2020, commencing at 10:00 A.M. the sale to be held at the Midland Railroad Hotel, 414 26th Street, Wilson, Kansas with the sale to start at 10:00 a.m., to the highest bidder for cash. All parties interested should take notice and govern themselves accordingly.

Travis M. Cullens  
Executor

THERESA L. STAUDINGER #24373  
PETERSON & STAUDINGER LLC  
221 N. Douglas, P.O. Box 398  
Ellsworth, Kansas 67439  
Telephone: 785-472-3155  
Fax: 785-472-4953  
Email: tls@petersonstaudinger.com  
Attorneys for Executor

3t 11/26

### Michael J. Podlena Estate

(First Published in the Ellsworth County Independent-Reporter November 12, 2020)

#### IN THE DISTRICT COURT OF ELLSWORTH COUNTY, KANSAS

**In the Matter of the Estate  
of Case No. 2020-PR-000035  
Michael J. Podlena, Deceased**

#### NOTICE OF HEARING AND NOTICE TO CREDITORS

THE STATE OF KANSAS TO ALL PERSONS CONCERNED:  
You are hereby notified that on November 5, 2020, a Petition was filed in this Court by Heather G. Wolting and Tamara K. McDaniel, as heirs of Michael J. Podlena, deceased, requesting Heather G. Wolting and Tamara K. McDaniel be appointed as Administrators of the Estate of Michael J. Podlena, without bond; and be granted Letters of Administration.

You are required to file your written defenses to the Petition on or before December 10, 2020, at 10:00 A.M. in the District Court, City of Ellsworth, Ellsworth County, Kansas, at which time and place the cause will be heard. Should you fail to file your written defenses, judgment and decree will be entered in due course upon the Petition.

All creditors are notified to exhibit their demands against the Estate within the latter of four months from the date of first publication of notice under K.S.A. 59-2236 and amendments thereto, or if the identity of the creditor is known or reasonably ascertainable, 30 days after actual notice was given as provided by law, and if their demands are not thus exhibited, they shall be forever barred.

Heather G. Wolting and Tamara K. McDaniel,  
Co-Petitioners

Sherman, Hoffman & Hoffman, LC  
126 N. Douglas Ave., P.O. Box 83  
Ellsworth, KS 67439-0083  
(785) 472-3186  
Attorneys for Petitioners

3t 11/26

[www.indyrepnews.com](http://www.indyrepnews.com)

### Bennington State Bank vs. Christina Goding et al

(First published in the Ellsworth County Independent-Reporter November 12, 2020)

#### IN THE DISTRICT COURT OF ELLSWORTH COUNTY, KANSAS

**THE BENNINGTON STATE BANK,  
Plaintiff  
v. Case No. 2020-CV-30**

**CHRISTINA KAY GODING KLINE a/k/a CHRISTINA KAY GODING a/k/a CHRISTINA K. GODING a/k/a CHRISTINA KAY GODING-STEINER; REBEL K. KLINE a/k/a REBEL KEITH CLINE; CHRISTINA KAY GODING KLINE a/k/a CHRISTINA KAY GODING a/k/a CHRISTINA K. GODING a/k/a CHRISTINA KAY GODING-STEINER, AS TRUSTEE OF THE CHRISTINA K. GODING REVOCABLE INTER VIVOS TRUST A/K/A CHRISTINA KAY GODING REVOCABLE INTER VIVOS TRUST a/k/a CHRISTINA K. GODING INTERVIVOS TRUST; REBEL KEITH KLINE, AS TRUSTEE OF THE REVOCABLE INTER VIVOS TRUST OF REBEL KEITH KLINE, DATED JANUARY 23, 2013; JOHN DOE, Unknown Tenant; and MARY DOE, Unknown Tenant; and the unknown heirs, executors, administrators, devisees, trustees, creditors and assigns of any deceased defendants; the unknown spouses of any defendants; the unknown officers, successors, trustees, creditors and assigns of any defendants that are existing, dissolved or dormant corporations; the unknown executors, administrators, devisees, trustees, creditors, successors and assigns of any defendants that are or were partners or in partnership; the unknown guardians, conservators and trustees of any defendants that are minors or are under any legal disability; and the unknown heirs, executors, administrators, devisees, trustees, creditors and assigns of any person alleged to be deceased, Defendants.  
(Title to Real Estate Involved)  
(Pursuant to K.S.A. Chapter 60)**

#### NOTICE OF SUIT

TO ALL OF THE ABOVE-NAMED DEFENDANTS, AND ALL OTHER PERSONS WHO ARE OR MAY BE CONCERNED:  
You are hereby notified that a Petition has been filed in the Ellsworth County District Court by The Bennington State Bank praying for foreclosure of real estate mortgages on the following described real property, to wit:

The East Half (E/2) of Section One (1), Township Fifteen (15) South, Range Eight (8) West of the 6th P.M., Ellsworth County, Kansas, less the following described tract: A parcel of land located in the Southeast Quarter (SE/4) of said Section 1, Township 15 South, Range 8 West commencing at the Southeast corner of said SE/4; thence on an assumed bearing of N 89° 55' 15"W along the South line of said SE/4 a distance of 50.0 feet to a point on the West right-of-way line of Kansas Highway 111, said point being the Point of beginning; thence continuing N 89° 55' 15"W along said South line a distance of 660.0 feet; thence N 00° 00' 00"E a distance of 660.0 feet; thence S 89° 55' 55"E a distance of 660.0 feet to a point on said West right-of-way line of Kansas Highway 111; thence S 00° 00' 00"E along said West right-of-way line a distance of 660.0 feet to the point of beginning

and

A fraction of the Southeast Quarter (Fr. SE/4) and the Southeast Quarter of the Northeast Quarter (SE/4 NE/4) of Section Thirty-six (36), Township Fourteen (14), Range Eight (8), West of 6th P.M., lying South of Hwy 156 and West of Hwy 111, being approximately one hundred and sixty-eight (168) acres, more or less,

and you are hereby required to answer or otherwise plead to said Petition on or before December 31, 2020 in the Ellsworth County District Court at Ellsworth, Kansas. If you fail to answer or otherwise plead, the Petition will be taken as true, and judgment and decree will be entered in due course upon the Petition.

Submitted by:  
Aaron O. Martin, #24170  
CLARK, MIZE & LINVILLE, CHARTERED  
P.O. Box 380  
Salina, KS 67402-0380  
Tel. (785) 823-6325; Fax (785) 823-1868  
aomartin@cml-law.com  
Attorneys for The Bennington State Bank

3t 12/3

### James Everett Knight Estate

(First published in the Ellsworth County Independent-Reporter October 29, 2020)

#### IN THE DISTRICT COURT OF ELLSWORTH COUNTY, KANSAS

**In the Matter of the Estate  
of Case No. 20 PR-32  
James Everett Knight, Deceased**

#### (Petition Pursuant to K.S.A. Chapter 59)

#### NOTICE OF HEARING AND NOTICE TO CREDITORS

THE STATE OF KANSAS TO ALL PERSONS CONCERNED:

You are hereby notified that on October 22, 2020, a Petition for Issuance of Letters of Administration was filed in this Court by LuAnn Knight, an heir of James Everett Knight, deceased, praying that Petitioner be appointed Administrator, without bond, and be granted Letters of Administration.

You are required to file your written defenses thereto on or before December 2, 2020, at 2:00 P.M. in the District Court of Ellsworth County, Kansas, at which time and place the case will be heard. Should you fail therein, judgment will be entered in due course upon the Petition.

All creditors of the decedent are notified to exhibit their demands against the Estate within the latter of four months from the date of first publication of notice under K.S.A. 59-2236 and amendments thereto, or if the identity of the creditor is known or reasonably ascertainable, 30 days after actual notice was given as provided by law, and if their demands are not thus exhibited, they shall be forever barred.

LuAnn Knight, Petitioner

Joseph R. Aker, #27912, of  
HAMPTON & ROYCE, L.C.  
9th Floor - United Building  
119 W. Iron - P.O. Box 1247  
Salina, KS 67402-1247  
(785) 827-7251  
Attorneys for Petitioner

4t 11/19

### Howard R. Vacek aka Rocky Vacek Estate

(First published in the Ellsworth County Independent-Reporter November 12, 2020)

#### IN THE DISTRICT COURT OF ELLSWORTH COUNTY, KANSAS

**In the Matter of the Estate  
of Case No. 20PR-34  
Howard R. Vacek aka Rocky Vacek, Deceased**

#### NOTICE OF HEARING AND NOTICE TO CREDITORS

THE STATE OF KANSAS TO ALL PERSONS CONCERNED:  
You are hereby notified that on November 2, 2020, a Petition was filed in this Court by Janet V. Stash, an heir, devisee and legatee, and Executor named in the "Last Will and Testament of Howard R. Vacek aka Rocky Vacek," deceased, dated November 2, 2016, requesting the instrument attached thereto be admitted to probate and record as the Last Will and Testament of the decedent; Letters Testamentary under the Kansas Simplified Estates Act be issued to the Executor to serve without bond.

You are further advised under the provisions of the Kansas Simplified Estates Act the Court need not supervise administration of the Estate, and no notice of any action of the Executor or other proceedings in the administration will be given, except for notice of final settlement of decedent's estate.

You are further advised if written objections to simplified administration are filed with the Court, the Court may order that supervised administration ensue.

You are required to file your written defenses to the Petition on or before December 3, 2020, at 8:30 A.M. in the District Court, in Ellsworth, in Ellsworth County, Kansas, at which time and place the cause will be heard. Should you fail to file your written defenses, judgment and decree will be entered in due course upon the Petition.

All creditors of the decedent are notified to exhibit their demands against the Estate within the latter of four months from the date of first publication of notice under K.S.A. 59-2236 and amendments thereto, or if the identity of the creditor is known or reasonably ascertainable, 30 days after actual notice was given as provided by law, and if their demands are not thus exhibited, they shall be forever barred.

Janet V. Stash,  
Petitioner

Sherman, Hoffman & Hoffman, LC  
126 N. Douglas Ave., P.O. Box 83  
Ellsworth, KS 67439-0083  
(785) 472-3186  
Attorneys for Petitioner

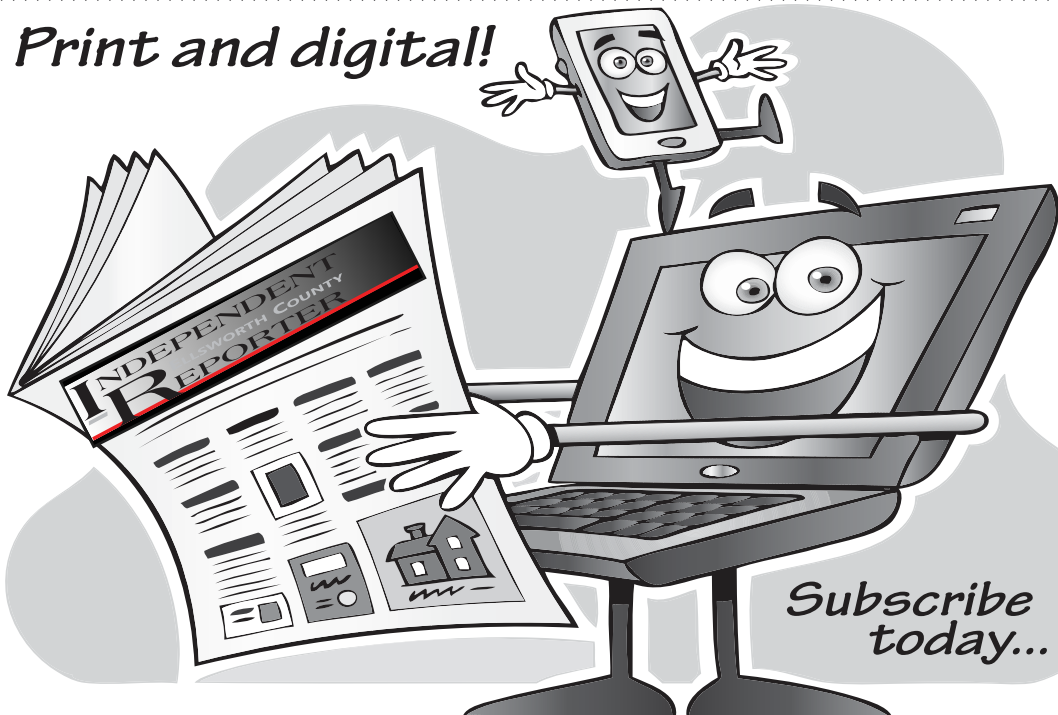
3t 11/26

## Statewide Ads

Place your ad  
in more than 135 Kansas  
newspapers  
for one low price!

Call the I-R for more information!  
(785) 472-5085

Print and digital!



Subscribe  
today...

# FOR TOTAL ACCESS!

304 N. Douglas • Ellsworth, KS • 785-472-5085 • [www.indyrepnews.com](http://www.indyrepnews.com)